

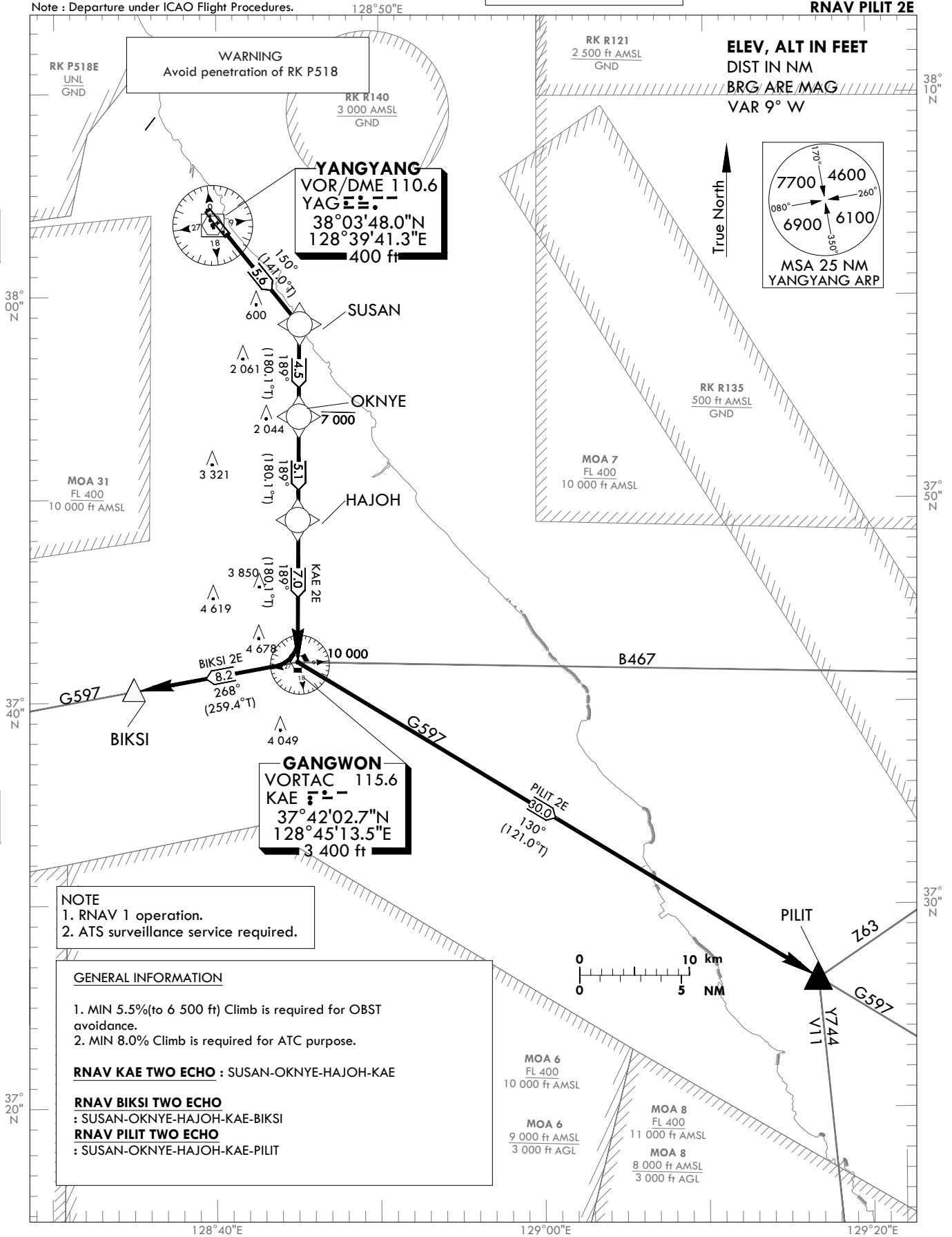
**STANDARD DEPARTURE  
CHART INSTRUMENT(SID) - ICAO**

TRANSITION ALT 14 000  
TRANSITION LVL FL140

GANGNEUNG DEP 124.6  
YANGYANG TWR 118.85  
124.375

**YANGYANG/Intl(RKNY)**  
RWY 15  
RNAV KAE 2E  
RNAV BIKSI 2E  
RNAV PILIT 2E

Note : Departure under ICAO Flight Procedures.



Change : Amended coordinate format.

**YANGYANG Intl(RKNY)**  
RWY 15  
RNAV KAE 2E  
RNAV BIKSI 2E  
RNAV PILIT 2E

**AERONAUTICAL DATA TABULATION**

**Standard Instrument Departure Procedure Coding Tables**

RNAV KAE 2E

| Serial Number | Path Descriptor | Waypoint Identifier | Fly-over | Course/Track °M(°T) | Distance (NM) | Turn direction | Altitude (ft) | Speed (kt) | Coordinates                | VPA/TCH* | Navigation specification | Remarks |
|---------------|-----------------|---------------------|----------|---------------------|---------------|----------------|---------------|------------|----------------------------|----------|--------------------------|---------|
| 001           | CF              | SUSAN               | -        | 150(141.0)          | 5.6           | -              | -             | -          | 37°58'41.3"N 128°45'15.6"E | -        | RNAV 1                   | -       |
| 002           | TF              | OKNYE               | -        | 189(180.1)          | 4.5           | -              | -7 000        | -          | 37°54'09.1"N 128°45'15.0"E | -        | RNAV 1                   | -       |
| 003           | TF              | HAJOH               | -        | 189(180.1)          | 5.1           | -              | -             | -          | 37°49'03.2"N 128°45'14.4"E | -        | RNAV 1                   | -       |
| 004           | TF              | KAE                 | -        | 189(180.1)          | 7.0           | -              | @10 000       | -          | 37°42'02.8"N 128°45'13.6"E | -        | RNAV 1                   | -       |

RNAV BIKSI 2E

| Serial Number | Path Descriptor | Waypoint Identifier | Fly-over | Course/Track °M(°T) | Distance (NM) | Turn direction | Altitude (ft) | Speed (kt) | Coordinates                | VPA/TCH* | Navigation specification | Remarks |
|---------------|-----------------|---------------------|----------|---------------------|---------------|----------------|---------------|------------|----------------------------|----------|--------------------------|---------|
| 001           | CF              | SUSAN               | -        | 150(141.0)          | 5.6           | -              | -             | -          | 37°58'41.3"N 128°45'15.6"E | -        | RNAV 1                   | -       |
| 002           | TF              | OKNYE               | -        | 189(180.1)          | 4.5           | -              | -7 000        | -          | 37°54'09.1"N 128°45'15.0"E | -        | RNAV 1                   | -       |
| 003           | TF              | HAJOH               | -        | 189(180.1)          | 5.1           | -              | -             | -          | 37°49'03.2"N 128°45'14.4"E | -        | RNAV 1                   | -       |
| 004           | TF              | KAE                 | -        | 189(180.1)          | 7.0           | -              | @10 000       | -          | 37°42'02.8"N 128°45'13.6"E | -        | RNAV 1                   | -       |
| 005           | TF              | BIKSI               | -        | 268(259.4)          | 8.2           | -              | -             | -          | 37°40'32.0"N 128°35'04.0"E | -        | RNAV 1                   | -       |

RNAV PILIT 2E

| Serial Number | Path Descriptor | Waypoint Identifier | Fly-over | Course/Track °M(°T) | Distance (NM) | Turn direction | Altitude (ft) | Speed (kt) | Coordinates                | VPA/TCH* | Navigation specification | Remarks |
|---------------|-----------------|---------------------|----------|---------------------|---------------|----------------|---------------|------------|----------------------------|----------|--------------------------|---------|
| 001           | CF              | SUSAN               | -        | 150(141.0)          | 5.6           | -              | -             | -          | 37°58'41.3"N 128°45'15.6"E | -        | RNAV 1                   | -       |
| 002           | TF              | OKNYE               | -        | 189(180.1)          | 4.5           | -              | -7 000        | -          | 37°54'09.1"N 128°45'15.0"E | -        | RNAV 1                   | -       |
| 003           | TF              | HAJOH               | -        | 189(180.1)          | 5.1           | -              | -             | -          | 37°49'03.2"N 128°45'14.4"E | -        | RNAV 1                   | -       |
| 004           | TF              | KAE                 | -        | 189(180.1)          | 7.0           | -              | @10 000       | -          | 37°42'02.8"N 128°45'13.6"E | -        | RNAV 1                   | -       |
| 005           | TF              | PILIT               | -        | 130(121.0)          | 30.0          | -              | -             | -          | 37°26'31.4"N 129°17'30.8"E | -        | RNAV 1                   | -       |

\* The term TCH equates to the use of the term RDH, within this context of the FAS data block.

Change : Amended coordinate format.

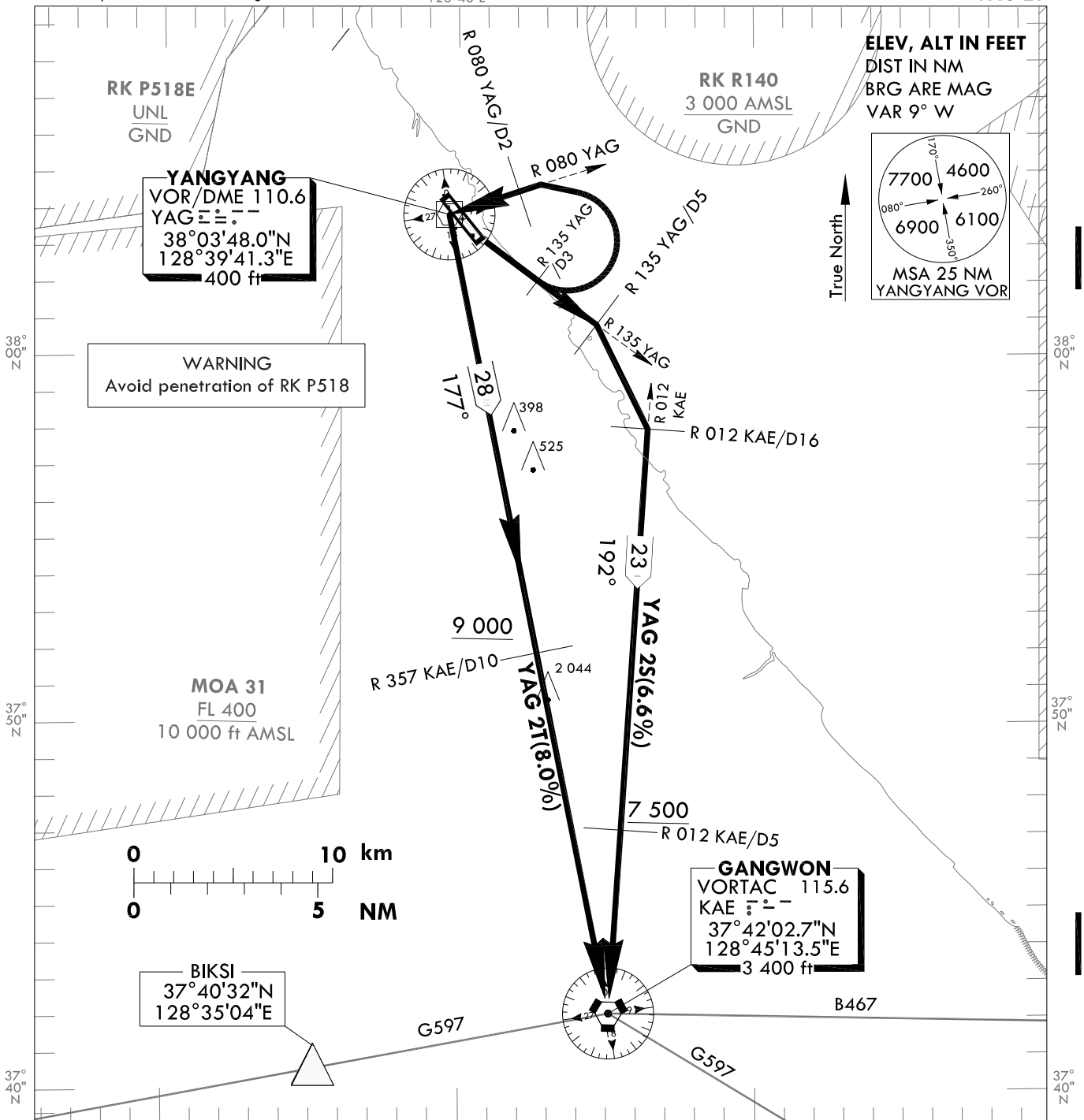
**STANDARD DEPARTURE CHART  
INSTRUMENT (SID) - ICAO**

TRANSITION ALT 14 000  
TRANSITION LVL FL 140

GANGNEUNG DEP 124.6  
YANGYANG TWR 118.85  
124.375

**YANGYANG/Intl(RKNY)**  
**RWY 15**  
**YAG 2S**  
**YAG 2T**

Note : Departure under ICAO Flight Procedures.



**SPEED CONTROL**

Maximum Speed for the first turn limited to 220 kt IAS for YANGYANG 2S, 250 kt IAS for YANGYANG 2T due to airspace restriction.

**NOTE**

1. Climb gradient in excess of 3.3% necessary for airspace and ATC purpose.  
-YANGYANG 2S minimum climb gradient 6.6% to 7 500 ft  
-YANGYANG 2T minimum climb gradient 8.0% to 9 000 ft
2. If unable to comply with flight restriction, request alternatives before departure.
3. Assignment of departure procedure depends on traffic situation around KAE.

**YANGYANG TWO SIERRA DEPARTURE**

Climb on R 135 YAG until YAG D5, then turn right and proceed R 012 KAE/D16, then proceed along R 012 KAE to KAE.  
Cross R 012 KAE/D5 at or above 7 500 ft.

**YANGYANG TWO TANGO DEPARTURE**

Climb on R 135 YAG until YAG D3, then turn left and proceed to YAG via R 080 YAG/D2, then proceed along R 357 KAE to KAE.  
Cross R 357 KAE/D10 at or above 9 000 ft.

Change : Amended coordinate format.

**INTENTIONALLY**

**LEFT**

**BLANK**

**STANDARD DEPARTURE  
CHART INSTRUMENT  
(SID) - ICAO**

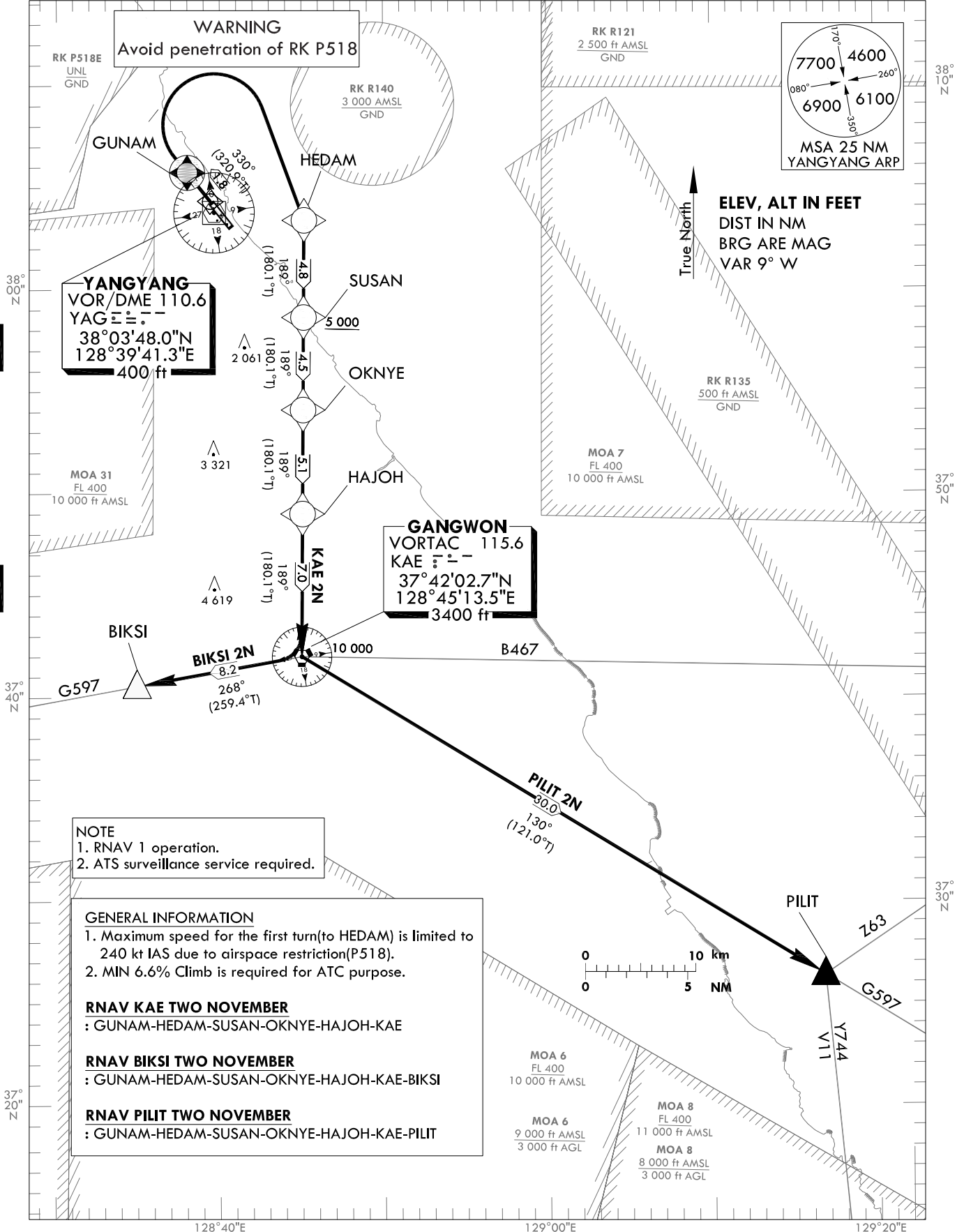
TRANSITION ALT 14 000  
TRANSITION LVL FL140

GANGNEUNG DEP 124.6  
YANGYANG TWR 118.85  
124.375

**YANGYANG/Intl(RKNY)**  
RWY 33  
RNAV KAE 2N  
RNAV BIKSI 2N  
RNAV PILIT 2N

Note : Departure under ICAO Flight Procedures.

128°50"E



**NOTE**  
1. RNAV 1 operation.  
2. ATS surveillance service required.

**GENERAL INFORMATION**  
1. Maximum speed for the first turn(to HEDAM) is limited to 240 kt IAS due to airspace restriction(P518).  
2. MIN 6.6% Climb is required for ATC purpose.

**RNAV KAE TWO NOVEMBER**  
: GUNAM-HEDAM-SUSAN-OKNYE-HAJOH-KAE

**RNAV BIKSI TWO NOVEMBER**  
: GUNAM-HEDAM-SUSAN-OKNYE-HAJOH-KAE-BIKSI

**RNAV PILIT TWO NOVEMBER**  
: GUNAM-HEDAM-SUSAN-OKNYE-HAJOH-KAE-PILIT

Change : Amended coordinate format.

**YANGYANG Intl(RKNY)**  
RWY 33  
RNAV KAE 2N  
RNAV BIKSI 2N  
RNAV PILIT 2N

**AERONAUTICAL DATA TABULATION**

**Standard Instrument Departure Procedure Coding Tables**

RNAV KAE 2N

| Serial Number | Path Descriptor | Waypoint Identifier | Fly-over | Course/Track<br>°M(°T) | Distance (NM) | Turn direction | Altitude (ft) | Speed (kt) | Coordinates                | VPA/TCH* | Navigation specification | Remarks |
|---------------|-----------------|---------------------|----------|------------------------|---------------|----------------|---------------|------------|----------------------------|----------|--------------------------|---------|
| 001           | CF              | GUNAM               | Y        | 330(320.9)             | 1.8           | -              | -             | -240       | 38°05'45.5"N 128°38'00.9"E | -        | RNAV 1                   | -       |
| 002           | DF              | HEDAM               | -        | -                      | -             | R              | -             | -240       | 38°03'27.0"N 128°45'16.2"E | -        | RNAV 1                   | -       |
| 003           | TF              | SUSAN               | -        | 189(180.1)             | 4.8           | -              | +5 000        | -          | 37°58'41.3"N 128°45'15.6"E | -        | RNAV 1                   | -       |
| 004           | TF              | OKNYE               | -        | 189(180.1)             | 4.5           | -              | -             | -          | 37°54'09.1"N 128°45'15.0"E | -        | RNAV 1                   | -       |
| 005           | TF              | HAJOH               | -        | 189(180.1)             | 5.1           | -              | -             | -          | 37°49'03.2"N 128°45'14.4"E | -        | RNAV 1                   | -       |
| 006           | TF              | KAE                 | -        | 189(180.1)             | 7.0           | -              | @10 000       | -          | 37°42'02.8"N 128°45'13.6"E | -        | RNAV 1                   | -       |

RNAV BIKSI 2N

| Serial Number | Path Descriptor | Waypoint Identifier | Fly-over | Course/Track<br>°M(°T) | Distance (NM) | Turn direction | Altitude (ft) | Speed (kt) | Coordinates                | VPA/TCH* | Navigation specification | Remarks |
|---------------|-----------------|---------------------|----------|------------------------|---------------|----------------|---------------|------------|----------------------------|----------|--------------------------|---------|
| 001           | CF              | GUNAM               | Y        | 330(320.9)             | 1.8           | -              | -             | -240       | 38°05'45.5"N 128°38'00.9"E | -        | RNAV 1                   | -       |
| 002           | DF              | HEDAM               | -        | -                      | -             | R              | -             | -240       | 38°03'27.0"N 128°45'16.2"E | -        | RNAV 1                   | -       |
| 003           | TF              | SUSAN               | -        | 189(180.1)             | 4.8           | -              | +5 000        | -          | 37°58'41.3"N 128°45'15.6"E | -        | RNAV 1                   | -       |
| 004           | TF              | OKNYE               | -        | 189(180.1)             | 4.5           | -              | -             | -          | 37°54'09.1"N 128°45'15.0"E | -        | RNAV 1                   | -       |
| 005           | TF              | HAJOH               | -        | 189(180.1)             | 5.1           | -              | -             | -          | 37°49'03.2"N 128°45'14.4"E | -        | RNAV 1                   | -       |
| 006           | TF              | KAE                 | -        | 189(180.1)             | 7.0           | -              | @10 000       | -          | 37°42'02.8"N 128°45'13.6"E | -        | RNAV 1                   | -       |
| 007           | TF              | BIKSI               | -        | 268(259.4)             | 8.2           | -              | -             | -          | 37°40'32.0"N 128°35'04.0"E | -        | RNAV 1                   | -       |

RNAV PILIT 2N

| Serial Number | Path Descriptor | Waypoint Identifier | Fly-over | Course/Track<br>°M(°T) | Distance (NM) | Turn direction | Altitude (ft) | Speed (kt) | Coordinates                | VPA/TCH* | Navigation specification | Remarks |
|---------------|-----------------|---------------------|----------|------------------------|---------------|----------------|---------------|------------|----------------------------|----------|--------------------------|---------|
| 001           | CF              | GUNAM               | Y        | 330(320.9)             | 1.8           | -              | -             | -240       | 38°05'45.5"N 128°38'00.9"E | -        | RNAV 1                   | -       |
| 002           | DF              | HEDAM               | -        | -                      | -             | R              | -             | -240       | 38°03'27.0"N 128°45'16.2"E | -        | RNAV 1                   | -       |
| 003           | TF              | SUSAN               | -        | 189(180.1)             | 4.8           | -              | +5 000        | -          | 37°58'41.3"N 128°45'15.6"E | -        | RNAV 1                   | -       |
| 004           | TF              | OKNYE               | -        | 189(180.1)             | 4.5           | -              | -             | -          | 37°54'09.1"N 128°45'15.0"E | -        | RNAV 1                   | -       |
| 005           | TF              | HAJOH               | -        | 189(180.1)             | 5.1           | -              | -             | -          | 37°49'03.2"N 128°45'14.4"E | -        | RNAV 1                   | -       |
| 006           | TF              | KAE                 | -        | 189(180.1)             | 7.0           | -              | @10 000       | -          | 37°42'02.8"N 128°45'13.6"E | -        | RNAV 1                   | -       |
| 007           | TF              | PILIT               | -        | 130(121.0)             | 3.0           | -              | -             | -          | 37°26'31.4"N 129°17'30.8"E | -        | RNAV 1                   | -       |

\* The term TCH equates to the use of the term RDH, within this context of the FAS data block.

Change : Amended coordinate format.

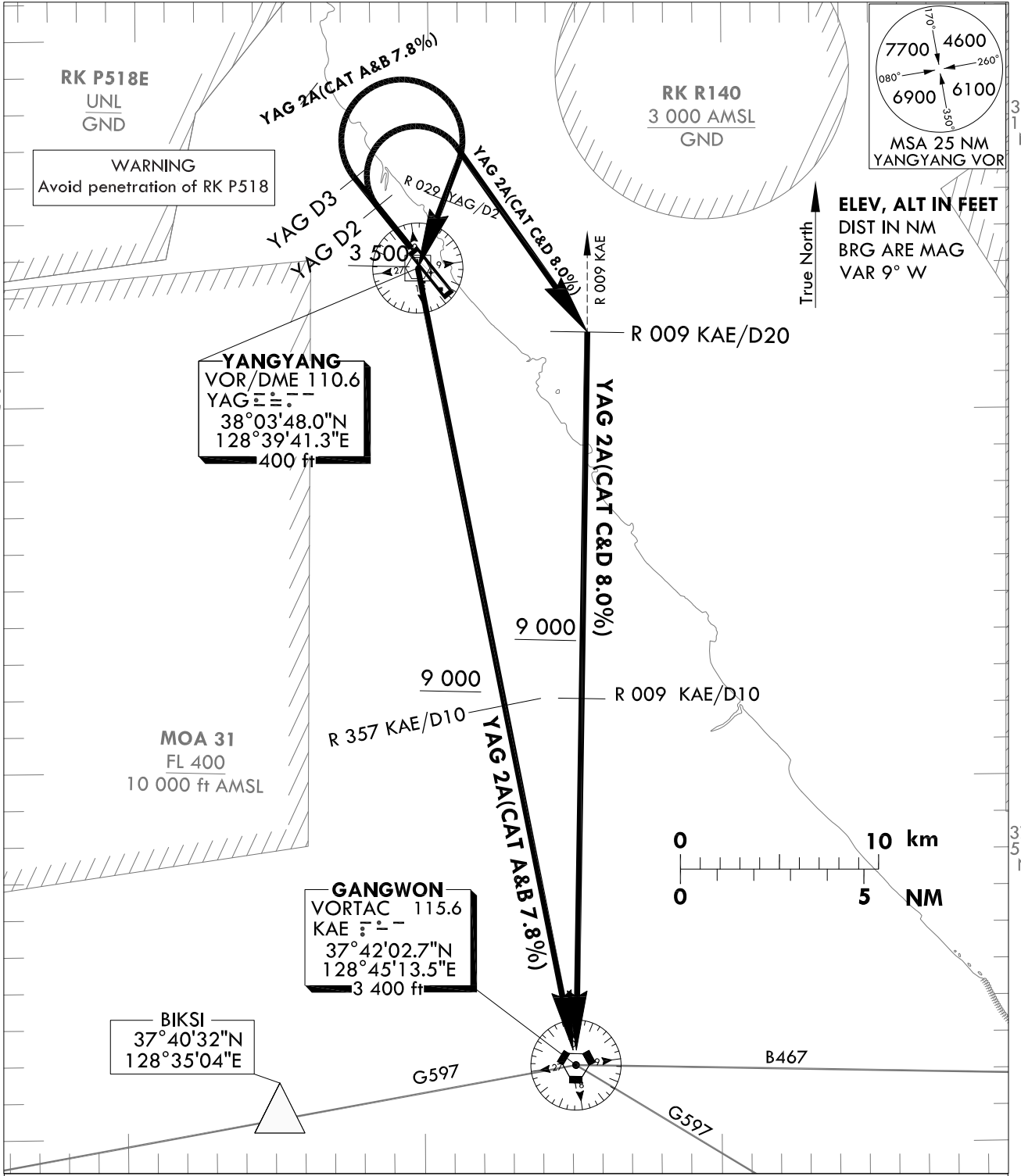
**STANDARD DEPARTURE  
CHART INSTRUMENT  
(SID) - ICAO**

TRANSITION ALT 14 000  
TRANSITION LVL FL140

GANGNEUNG DEP 124.6  
YANGYANG TWR 118.85  
124.375

**YANGYANG/Intl(RKNY)**  
RWY 33  
YAG 2A

Note : Departure under ICAO Flight Procedures.



**SPEED CONTROL**

Maximum Speed for the first turn limited to 240 kt IAS due to airspace restriction.

**NOTE**

1. Climb gradient in excess of 3.3% necessary for airspace and ATC purpose.  
-Minimum climb gradient for CAT A&B is 7.8% and for CAT C&D is 8.0% to 9 000 ft
2. Pilot shall use extreme caution not to penetrate RK P518 approx 7 DME NW of YAG.
3. If unable to comply with flight restriction, request alternatives before departure.

**YANGYANG TWO ALPHA DEPARTURE :**

CAT A & B : Climb on HDG 329° to YAG D3, then turn right and proceed to YAG via R 029 YAG/D2, then proceed along R 357 KAE to KAE. Cross YAG at or above 3 500 ft, R 357 KAE/D10 at or above 9 000 ft.

CAT C & D : Climb on HDG 329° to YAG D2, then turn right and proceed to R 009 KAE/D20, then proceed along R 009 KAE to KAE. Cross R 009 KAE/D10 at or above 9 000 ft.

Change : Amended coordinate format.

**INTENTIONALLY**

**LEFT**

**BLANK**